

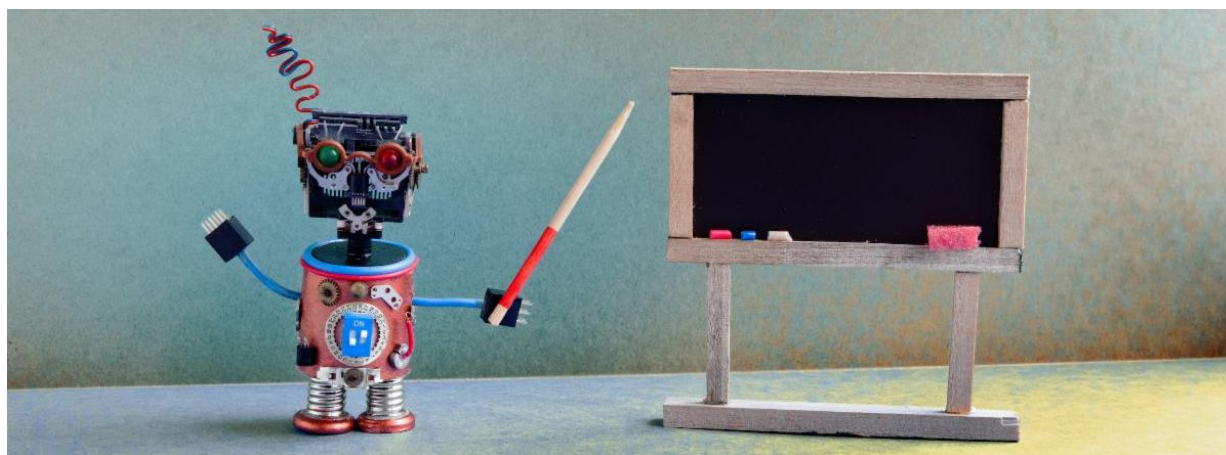
Baking to Combat Racism....Learn more inside!



SESYNC Feedbacks

News from the National Socio-Environmental Synthesis Center

TEACHING S-E | Educational Resources from SESYNC



Resources on Teaching S-E Systems Available from SESYNC

As you're preparing for the fall semester, don't forget to take advantage of the many teaching and learning resources that we currently have available on the [SESYNC website](#):

SES Video Series - This 3-part video series addresses common questions, like: What are socio-environmental systems (SES)? What is synthesis? and How do you conduct synthesis research? The videos give examples showing the complexity and rewards of studying the relationships and dynamics in SES.

Immersion Workshop Videos - Here you'll find videos on our YouTube channel from past Immersion Workshop lectures. Each topic has multiple videos in which experts in a given discipline discuss approaches to socio-environmental systems questions, including theories, methods, and topics that are central to their

discipline's engagement with interdisciplinary research.

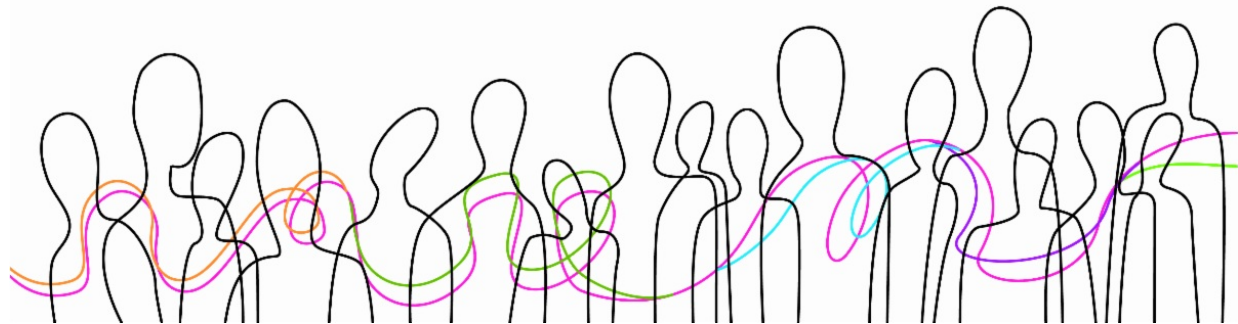
SES Synthesis Tutorials - These tutorials introduce fundamental concepts about SES. Each tutorial consists of written text and accompanying resources that illustrate some of the key concepts for understanding SES.

Case Study Collection - A collection of case studies, each focusing on learning goals critical for understanding and practicing S-E synthesis, that was developed by participants in the Teaching Socio-Environmental Synthesis with Case Studies short course.

Case Study Teaching Resources - Resources are available here for designing and teaching socio-environmental (S-E) synthesis case studies.

For questions about these resources, please contact education@sesync.org.

VIRTUAL TEAM SCIENCE | New Resources for Staying Connected



New Resources Added to SESYNC's Virtual Resources Web Page

As we've finally started to adapt to working and meeting online, we're finding that more and more tools and tips for successfully navigating virtual collaborations are becoming available. So, we've updated our web page **Resources and Tips for Elevating Your Team Science in an All-Virtual World** with additional articles, blogs, guides, and best practices to help you make the most of your virtual collaborations.

Resources from SESYNC include guidance and tips from SESYNC's experts, as well as personal accounts from some of our SESYNC researchers on ways they have successfully managed virtual collaboration. We've also included useful **resources from the wider community**, which cover a range of topics from technical guidance for Zoom meetings, to strategies for building community online, to information on how to make meetings accessible.

As a reminder, SESYNC is also continuing to offer **personalized support to our teams**. For team science questions or issues directly related to your SESYNC-supported work, contact us at teamhelp@sesync.org to be connected with one of our team science experts on staff. For computational support, visit cyberhelp.sesync.org to view our FAQs; quick-start pages; and full-length lessons on topics including text mining, creating maps, and agent-based modeling, or contact cyberhelp@sesync.org with your data science questions. Visit our **resources page** for more.

POSTDOC NEWS | SESYNC Welcomes New Postdoc Cohort

Learn About Our Newest Group of Postdoctoral Fellows

SESYNC is pleased to introduce our newest postdocs, Renee Obringer, Katie Peterson, and Ryan Unks. While they're working remotely for now, we're looking forward to seeing them in person at the Center soon. Read below to learn more about them and their research.



Renee Obringer is an interdisciplinary researcher who works at the nexus of data science, urban systems, and climate change. Her research projects range from using machine learning to model urban reservoir levels to analyzing the impact of climate change on the water-energy nexus. Renee earned her PhD in environmental and ecological engineering from Purdue University in 2020. She was also a member of the Ecological Science and Engineering Interdisciplinary Graduate Program. [Learn more.](#)

Katie Peterson is a quantitative ecologist who is interested in how interspecific interactions shape community dynamics and in the applications of this ecological knowledge for conservation and sustainable management. She is also interested in the role of uncertainty in making decisions from ecological models and how this contributes to the value of information in decision science. [Learn more.](#)



Ryan Unks is an interdisciplinary scientist with training in landscape and plant ecology, rural livelihoods, and environmental governance. His research at SESYNC uses mixed methods to study landscape ecological change and pastoralist livelihoods in central and southern Kenya. His approach focuses on understanding the drivers and implications of vegetation change as situated in complex social contexts. [Learn more.](#)

GIVING BACK | Baking to Combat Racism

SESYNC Postdoc Varsha Vijay Recently Participated in Bakers Against Racism, a Virtual Bake Sale Designed to Raise Money for Causes Fighting Racism

As part of her efforts, Varsha used her baking talents to create treats that she sold to her neighbors, friends, and colleagues. Below, she shares more about how she got involved and why this initiative is important to her.

Q: How did you hear about the Bakers Against Racism Bakeshop initiative? And what about this effort inspired you to get involved?

VV: I am an avid home cook and baker and saw the initiative on some social media accounts. The campaign, started by Washington, DC area pastry chefs of color (<https://www.bakersagainstracism.com/>), is a global, virtual bake sale with proceeds going to social organizations combating racism. I was inspired by the idea of working together with bakers (professional and home bakers) to raise money for these important causes.



In this recent moment of reckoning, an important aspect for me has been to recognize the role that I can play and the role for others. [Read more.](#)

STAY CONNECTED | Follow Us on Social Media

Keep in touch with us via social media and be sure to check out our [YouTube channel](#) for informative videos on socio-environmental research topics.



"Using case study data to understand SES interactions: a model-centered meta-analysis of SES framework applications." Published in *Current Opinion in Environmental Sustainability* by Sergio Villamayor-Tomas, Christoph Oberlack, Graham Epstein, Stefan Partelow, Matteo Roggero, Elke Kellner, Maurice Tschopp, and Michael Cox. This paper resulted from the Pursuit, [Testing and Extending Ostrom's Frameworks: Quantitative Synthesis and Modeling of Social-Ecological Dynamics](#).

"Conceptualizing social-ecological drivers of change in urban forest patches." Published in *Urban Ecosystems* by Lea R. Johnson, Michelle L. Johnson, Myla F. J. Aronson, Lindsay K. Campbell, Megan E. Carr, Mysha Clarke, Vincent D'Amico, Lindsay Darling, Tedward Erker, Robert T. Fahey, Kristen L. King, Katherine Lautar, Dexter H. Locke, Anita T. Morzillo, Stephanie Pincetl, Luke Rhodes, John Paul Schmit, Lydia Scott, and Nancy F. Sonti. This paper resulted from the Pursuit, [Social-Ecological Drivers of Change Over Time in Urban Woodlands](#).

"Scenarios for Global Aquaculture and Its Role in Human Nutrition." Published in *Reviews in Fisheries Science & Aquaculture* by Jessica A. Gephart, Christopher D. Golden, Frank Asche, Ben Belton, Cecile Brugere, Halley E. Froehlich, Jillian P. Fry, Benjamin S. Halpern, Christina C. Hicks, Robert C. Jones, Dane H. Klinger, David C. Little, Douglas J. McCauley, Shakuntala H. Thilsted, Max Troell, and Edward H. Allison. This paper resulted from the Workshop, [Fisheries & Food Security](#).

"Global Water Grabbing and Food Insecurity." A chapter published in the book *Food Insecurity: A Matter of Justice, Sovereignty, and Survival* by former SESYNC postdoc Jampel Dell'Angelo, former SESYNC fellow Paolo D'Odorico, and their colleague Maria Cristina Rulli.

"Key challenges for governing forest and landscape restoration across different contexts." Published in *Land Use Policy* by Robin L. Chazdon, Sarah J. Wilson, Eduardo Brondizio, Manuel R. Guariguata, and John Herbohn, as a result of the Pursuit, [Tropical Reforestation](#).

"Investigating the direct and indirect effects of forest fragmentation on plant functional diversity." Published in *PLOS One* by former SESYNC postdocs Jenny Zambrano and Noelle G. Beckman and colleagues Norbert J. Cordeiro, Carol Garzon-Lopez, Lauren Yeager, Claire Fortunel, and Henry J. Ndongalasi.

"Conceptual Links between Landscape Diversity and Diet Diversity: A Roadmap for Transdisciplinary Research." Published in *BioScience* by Sarah E. Gergel, Bronwen Powell, Frédéric Baudron, Sylvia L. R. Wood, Jeanine M. Rhemtulla, Gina Kennedy, Laura V. Rasmussen, Amy Ickowitz, Matthew E. Fagan, Erica A.H. Smithwick, Jessica Ranieri, Stephen A. Wood, Jeroen C.J. Groot, and Terry C.H. Sunderland. This paper resulted from the Pursuit, [Food Landscape & Diversity](#).

"Disease-mediated ecosystem services: Pathogens, plants, and people." Published in *Trends in Ecology and Evolution* by Rachel E. Paseka, SESYNC postdoc Lauren A. White, Dedmer B. Van de Waal, Alex T. Strauss, Angélica L. González, Rebecca A. Everett, Angela Peace, Eric W. Seabloom, Thijs Frenken, and Elizabeth T. Borer. The paper resulted from the Pursuit, [Microbial disease dynamics, ecosystem processes, and human eutrophication of the environment](#).

"A mechanistic, stigmergy model of territory formation in solitary animals: Territorial behavior can dampen disease prevalence but increase persistence." Published in *PLOS Computational Biology* by SESYNC postdoc Lauren White and colleagues Sue VandeWoude and Meggan E. Craft.

"Considering unseen arrivals in predictions of establishment risk based on border biosecurity interceptions." Published in *Ecological Applications* by Rebecca Turner, Michael J. Plank, Eckehard Brockerhoff, Stephen Pawson, Andrew Liebhold, and Alex James, as part of the Pursuit, [Global Socioeconomic Drivers of Insect Invasions](#).

GET MORE SESYNC

Stay Connected



1 Park Place, Suite 300, Annapolis, MD 21401
410.919.4810

